

AJR Annual Security and Fire Safety Report

2022-2023 / 5783

Paper copies of this report may be obtained from the AJR office (AJROffice@ajr.edu)

About this Report

In accordance with the Campus Security Act (also known as the Jeanne Clery Disclosure of Campus Security Policy and Campus Crime Statistics Act, or the Clery Act for short, as amended by the Violence Against Women Act reauthorization of 2013, 20 U.S.C. 1092(f)), AJR must annually publish a security report that is distributed to all students. These reports contain policies and procedures as well as campus crime statistics, which are also reported to the United States Department of Education (<http://ope.ed.gov/security>). The Clery Act also requires timely warning notices of crimes that may pose an ongoing threat to students, staff, faculty, and administration, as well as the maintenance of crime and fire logs, and other efforts to protect our educational community. Please note that all policies apply equally to all students regardless of race, ethnicity, religion, national origin, age, disability, sexual orientation, gender identity, or gender expression. For information regarding the requirements for this report, please see the [Handbook for Campus Safety and Security Reporting](#).

The AJR Campus

The AJR campus is located at 28 Wells Ave, Yonkers NY 10701. AJR does not maintain any satellite locations. AJR does hold events at other locations, including Ordination – typically held at a synagogue in Westchester – as well as the fall Retreat – typically held offsite at a hotel. AJR does not maintain any on-campus student housing facilities.

Please note that for the purposes of “Clery geography,” this report includes information about AJR’s campus as well as public property within or immediately adjacent to, and accessible from, AJR’s campus.

Reporting a Crime, Offense, or Emergency

If you are aware of a crime or offense, or any other emergency, that is a potential threat to AJR or any AJR students, faculty, staff, or administrators that has occurred or may be about to occur on or nearby AJR’s campus, please contact Suli Fassler, Senior Director of Administration (sfassler@ajr.edu), and Dr. Ora Horn Prouser, CEO and Academic Dean (ohornprouser@ajr.edu), or contact the main office at 914-709-0900. For information regarding the rights of victims for orders of protection, “no contact” orders, restraining orders, or similar lawful orders issued by a criminal, civil or tribal court, or by AJR, please contact AJR’s Title IX Coordinators, Dr. Matthew Goldstone (mgoldstone@ajr.edu), Rabbi Beth Kramer-Mazer (bkramermazer@ajr.edu), or Cantor Michael Kasper (mkasper@ajr.edu).

If you wish to report this information confidentially to the AJR administration, please indicate this at the time of initially reporting the crime, threat, or emergency. While AJR is required to

provide statistics and information about reported crimes to the US government as well as its campus community, AJR's Title IX Coordinators will do their best to ensure the confidentiality of information that it receives, both with respect to the person reporting the information and the victim of the crime (if they are different individuals).

If you are the victim of a crime committed on AJR's campus, or in an area that falls within AJR's jurisdiction, the administration will provide you with a written explanation of your rights and options following the receipt of your report.

It is important for victims of a crime, when possible, to preserve evidence of the crime that may assist in proving that the alleged crime occurred and/or which may be helpful in obtaining a protection order.

For information about reporting a crime of a sexual nature, please contact one or all of AJR's Title IX Coordinators, Dr. Matthew Goldstone (mgoldstone@ajr.edu), Rabbi Beth Kramer-Mazer (bkramermazer@ajr.edu), and Cantor Michael Kasper (mkasper@ajr.edu). Please note that complaints may also be filed with the NY Police Department simultaneously. AJR will comply with student requests for assistance in notifying authorities. For a full description of the process and policies regarding the reporting, investigation, and response to crimes of a sexual nature, please see [AJR's Harassment Policy](#).

Information regarding an alleged crime that is reported to AJR personnel will be kept private to the extent possible. Privacy means that an employee may have to share information pursuant to federal or state law or college policy with certain other college employees, but they will not share the private information beyond what is required or needed to comply with law and policy, and will otherwise limit redisclosure as much as possible. Please note that AJR does not guarantee the confidentiality (as defined by [NYS Law Chapter 16, Title 7, Article 129b](#)) of information provided with AJR personnel.

Once a threat has been reported, the AJR administration will quickly assess the situation and notify all students, faculty, and staff who are expected to be on or near campus within 24 hours of the notification via email.

Definitions of Crimes

AJR prohibits all crimes described below including, but not limited to, the crimes of dating violence, domestic violence, sexual assault, and stalking, as defined below.

The definitions of reportable crimes are drawn from the FBI Uniform Crime Reporting National Incident-Based Reporting System (NIBRS) Crime Definitions. Reportable crimes include:

MURDER AND NON NEGLIGENT MANSLAUGHTER

The willful (non-negligent) killing of one human being by another.

NEGLIGENT MANSLAUGHTER

The killing of another person through gross negligence.

AGGRAVATED ASSAULT

An unlawful attack by one person upon another for the purpose of inflicting severe or aggravated bodily injury. This type of assault usually is accompanied by the use of a weapon or by means likely to produce death or great bodily harm. Simple assaults are excluded.

ARSON

Any willful or malicious burning or attempt to burn, with or without intent to defraud, a dwelling house, public building, motor vehicle or aircraft, personal property of another, etc.

BURGLARY

The unlawful entry of a structure to commit a felony or a theft. Attempted forcible entry is included.

ROBBERY

The taking or attempting to take anything of value from the care, custody, or control of a person or persons by force or threat of force or violence and/or by putting the victim in fear.

MOTOR VEHICLE THEFT

The theft or attempted theft of a motor vehicle. A motor vehicle is self-propelled and runs on the surface and not on rails. Motorboats, construction equipment, airplanes, and farming equipment are specifically excluded from this category.

Sex Offenses:

The Clery Act has four defined sex offenses for which crime statistics must be collected on Clery geography. They are: rape, fondling, incest, and statutory rape.

RAPE

The penetration, no matter how slight, of the vagina or anus with any body part or object, or oral penetration by a sex organ of another person, without the consent of the victim.

FONDLING

The touching of the private body parts of another person for the purpose of sexual gratification, without the consent of the victim, including instances where the victim is incapable of giving consent because of his/her age and/or because of his/her temporary or permanent mental incapacity.

INCEST

Non forcible sexual intercourse between persons who are related to each other within the degrees wherein marriage is prohibited by law.

STATUTORY RAPE

Non forcible sexual intercourse with a person who is under the statutory age of consent.

Drug, Alcohol, and Weapon Violations:

DRUG ABUSE

Violations of Federal, State and local laws relating to the unlawful possession, sale, use, growing, manufacturing, and making of narcotic drugs. The relevant substances include: opium or cocaine and their derivatives (morphine, heroin, codeine); marijuana; synthetic narcotics (demerol, methadones); and dangerous non-narcotic drugs (barbituates, benzedrine).

LIQUOR VIOLATION

Violation of state or local laws or ordinances prohibiting the manufacture, sale, purchase, transportation, possession or use of alcoholic beverages, not including driving under the influence and drunkenness.

WEAPON VIOLATION

The violation of laws or ordinances prohibiting the manufacture, sale, purchase, transportation, possession, concealment, or use of firearms, cutting instruments, explosives, incendiary devices or other deadly weapons. This classification encompasses weapons offenses that are regulatory in nature.

Hate Crimes

A criminal offense that manifests evidence that the victim was intentionally selected because of the perpetrator's bias against the victim. For the purposes of the Clery Act, hate crimes are those in which the victim is intentionally selected because of actual or perceived race, gender, age, religion, national origin, sexual orientation, gender identity, ethnicity, or disability. Reported hate crimes include bias-motivated acts of several crimes delineated above (murder and non-negligent manslaughter, forcible and non-forcible sex offenses, robbery, aggravated assault, burglary, motor vehicle theft, and arson), as well as the following:

LARCENY

The unlawful taking, carrying, leading, or riding away of property from the possession or constructive possession of another.

SIMPLE ASSAULT

An unlawful physical attack by one person upon another where neither the offender displays a weapon, nor the victim suffers obvious severe or aggravated bodily injury involving apparent broken bones, loss of teeth, possible internal injury, severe laceration or loss of consciousness.

INTIMIDATION

To unlawfully place another person in reasonable fear of bodily harm through the use of threatening words and/or other conduct, but without displaying a weapon or subjecting the victim to actual physical attack.

DESTRUCTION/DAMAGE/VANDALISM

To willfully or maliciously destroy, damage, deface or otherwise injure real or personal property without the consent of the owner or the person having custody or control of it.

Violence Against Women Act (2013) Crimes

DATING VIOLENCE

Violence committed by a person:

(A) Who is or has been in a social relationship of a romantic or intimate nature with the victim; and

(B) Where the existence of such a relationship shall be determined based on a consideration of the following factors:

(i) The length of the relationship.

(ii) The type of relationship.

(iii) The frequency of interaction between the persons involved in the relationship.

DOMESTIC VIOLENCE

Felony or misdemeanor crimes of violence committed by a current or former spouse of the victim, by a person with whom the victim shares a child in common, by a person who is cohabitating with or has cohabitated with the victim as a spouse, by a person similarly situated to a spouse of the victim under the domestic or family violence laws of the jurisdiction receiving grant monies, or by any other person against an adult or youth victim who is protected from that person's acts under the domestic or family violence laws of the jurisdiction.

STALKING

A course of conduct directed at a specific person that would cause a reasonable person to:

(A) Fear for his or her safety or the safety of others; or

(B) Suffer substantial emotional distress

Crime Statistics

The following crime statistic data reflects crimes perpetrated within AJR's Clery Geography (i.e., AJR's campus as well as public property within or immediately adjacent to, and accessible from, AJR's campus).

Note: 2022 data is through August 1, 2022.

Alleged Crime/Violation	2022	2021	2020
Murder and Non-Negligent Manslaughter	0	0	0
Negligent Manslaughter	0	0	0
Aggravated Assault	0	1	0
Arson	0	0	0
Burglary	0	0	0
Robbery	0	1	0
Motor Vehicle Theft	0	0	0
Rape	0	0	0
Fondling	0	0	0
Incest	0	0	0
Statutory Rape	0	0	0
Drug Abuse	0	2	0
Liquor Violation	0	0	0
Weapon Violation	0	0	0
Hate Crime*	0	0	0
Larceny	3	4	1
Simple Assault	0	0	0
Intimidation	0	0	0
Destruction/Damage/Vandalism	0	0	0
Dating Violence	0	0	0
Domestic Violence	0	0	0
Stalking	0	0	0

* For information regarding the specific nature of a hate crime, including the actual or perceived category of the victim that motivated the crime, please contact the AJR Office.

Please note that these crime statistics are gathered and disseminated annually by the AJR office. If you have questions regarding any of this information or the process through which this information is collected, please contact the AJR office (sfassler@ajr.edu).

Security

The security of AJR's students, faculty, staff, and visitors is of the utmost priority. For this reason, the AJR campus is secured by two sets of forced entry security glass doors equipped with a keypad entry system at the front entrance, the main window to the office is made of security glass, and there is also a forced entry security door on the mezzanine level.

AJR provides students with IDs that grant entrance during normal business hours and administrators with unique passcodes that allow 24 hour access. Visitors are granted entrance by the Registrar and Bursar, or the Executive Assistant who work in the office abutting the main entrance. *If you are planning on bringing a visitor to AJR, please notify the office in advance so they know to expect your guest.* The office will issue guests a temporary nametag that should be worn in a visible location at all times while on campus.

If you notice someone who you do not recognize as part of the AJR community, or if you notice any activity that seems concerning or alarming, please report this information to one of the AJR administrators immediately.

AJR is a warm and welcoming community and we encourage you to open the door for members of our community whom you recognize. But, in order to ensure the security of our campus, please **do not hold the door open or let anyone into the building whom you do not recognize**. All guests and visitors should check in with, and be admitted by, the office.

AJR does not maintain its own security staff, but works closely with the Yonkers Police Department to ensure the safety of its facility and community.

For AJR's policies regarding drugs and alcohol, as well as the information that AJR distributes as part of its efforts towards drug and alcohol abuse education, please see the Academic Catalog, Section IV:S. The unlawful possession, use, or distribution of drugs and alcohol by students and employees on the school's property or as part of the school's activities is prohibited. For exceptions to the use and possession of alcohol at AJR, see the Student Handbook, Section VI.

If you have further ideas for possible ways that AJR can continue to improve the security of its campus and everyone present, or if you have questions related to security at AJR, please direct your suggestions and inquiries to our Academic Dean, Dr. Ora Horn Prouser (ohornprouser@ajr.edu).

Evacuations & Emergencies

In the event of an **evacuation**, there are two exits located on the first floor and one on the second (marked in red in the diagram below).

In the event of a **fire**, please use the exit that is the safest for you to reach. This will typically be the exit that is the furthest from the fire. Please proceed to the tunnel area across from the AJR campus and to the parking lot beyond it. Find other AJR members in the parking lot and let any members of the administration present know immediately if you are aware of anyone remaining in the building, please call 911 to alert the proper authorities.

The locations of fire extinguishers are noted in the diagram below.

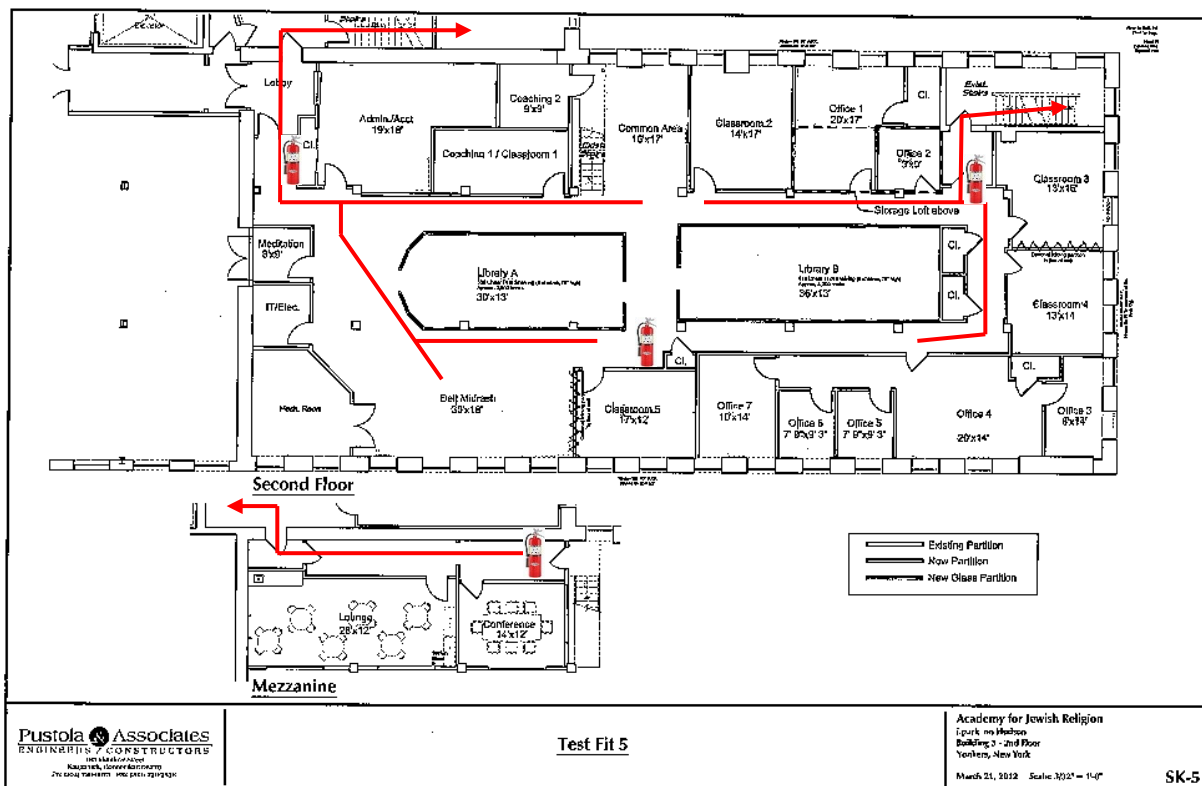
If possible, while exiting the building, activate a fire alarm box on your way out of the building. The fire department will be signaled by the alarm's activation. Please note that falsely activating a fire alarm is illegal and will result in disciplinary measures and potentially a monetary fine. Tampering with fire safety equipment of any kind is strictly forbidden and subject to fines as well as disciplinary action.

In the event of an **earthquake**, the safest location is typically in a doorway away from large heavy objects such as bookcases that may fall. Once an earthquake has concluded, please exit the building and proceed to the tunnel area across from the AJR campus and to the parking lot beyond it. Find other AJR members in the parking lot and let any members of the administration present know immediately if you are aware of anyone remaining in the build.

While AJR's security doors should prevent unwanted intruders from entering the building, in the event of an **active shooter**, please barricade yourself in the Executive Administrative Offices (the large area marked in blue on the first floor in the map below) or in the Financial Office (the smaller area on the first floor marked in blue), which has a blackout curtain for the window. If you are on the mezzanine level and are unable to exit the campus, the Lounge is the safest location and can be locked from the inside. The additional doors in the upstairs hallway should be closed and locked as well. Once inside one of these locations, please make sure to lock the door and, if possible, position a chair or heavy object in front of the door to block access. Once you have secured yourself within the building, please call 911 to alert the proper authorities.

AJR Campus Evacuation Routes

The AJR campus has two stairways that lead out of the building, one towards the main campus entrance that can also be accessed from the second floor and one towards the back of the campus (near classroom 3). In the event of an emergency, please use the exit that is safest for you in the given situation. The closest exits are marked in the evacuation routes map below.



Drugs and Alcohol

The unlawful possession, use, or distribution of drugs and alcohol by students and employees on the school's property or as part of the school's activities is prohibited and may result in monetary fines and imprisonment. For New York State sanctions regarding the possession or sale of drugs, see [here](#). For federal laws relevant to controlled substances, see [here](#). For AJR sanctions concerning students, faculty, employees, or administrators who violate AJR's drug and alcohol policy, see the Academic Catalog, Section IX:D. For exceptions to the use and possession of alcohol at AJR, see the Student Handbook, Section VI.

For information regarding the health risks of substance abuse, as well as New York State resources, see [here](#).

AJR has established the Rabbi Gabriel Kirshner z"l Wellness Fund, which is intended to provide limited financial support for students seeking initial counseling consultation. Students in need of drug and or alcohol counseling should contact AJR's Director of Student Life (mkasper@ajr.edu) regarding their eligibility for support from this fund.

Primary Prevention and Awareness Program

AJR's Primary Prevention and Awareness Program to prevent dating violence, domestic violence, sexual assault, and stalking involves the following elements:

- Information will be disseminated to all students (including new students) as well as employees regarding AJR's Primary Prevention and Awareness Program.
- A statement that AJR prohibits the crimes of dating violence, domestic violence, sexual assault, and stalking.
- Defining the term "consent" as it applies to sexual activity. The New York State definition can be found [here](#).
- Information regarding safe and positive options for bystander intervention as well as information regarding risk reduction.
- Requiring that each member of the Student Association leadership formally acknowledges their familiarity with AJR's Sexual Harassment Policy.
- Annually distributing information to the student body and AJR employees related to the prevention of the crimes of dating violence, domestic violence, sexual assault, and stalking, including, but not necessarily limited to, AJR's Sexual Harassment Policy. This distribution of information may be in the form of digital materials, lunchtime program informational sessions, or other formats. When such a dissemination of information occurs synchronously, AJR encourages, but does not require, all AJR students to attend.

AJR's policies regarding domestic and sexual violence can be found as an appendix to the Academic Catalog and on the AJR website at <https://ajr.edu/students/ajr-policies-on-discrimination-harassment-and-sexual-assault/>

AJR community members should be aware of the differences between AJR policies and procedures related to addressing sexual and interpersonal violence and those processes and policies that apply to the criminal justice system. Information regarding this distinction can be found [here](#).

Bias and Hate Related Crimes and Prevention

[§6436 of Article 129-A of New York State Education Law](#) requires that AJR provide students with information regarding bias related crimes and preventing such crimes.

[New York State Law](#) provides the following information regarding hate crimes.

A person commits a hate crime when he or she commits a specified offense and either:

(a) intentionally selects the person against whom the offense is committed or intended to be committed in whole or in substantial part because of a belief or perception regarding the race, color, national origin, ancestry, gender, gender identity or expression, religion, religious practice, age, disability or sexual orientation of a person, regardless of whether the belief or perception is correct, or

(b) intentionally commits the act or acts constituting the offense in whole or in substantial part because of a belief or perception regarding the race, color, national origin, ancestry, gender, gender identity or expression, religion, religious practice, age, disability or sexual orientation of a person, regardless of whether the belief or perception is correct.

Note that proof of race, color, national origin, ancestry, gender, gender identity or expression, religion, religious practice, age, disability or sexual orientation of the defendant, the victim or of both the defendant and the victim does not, by itself, constitute legally sufficient evidence satisfying the people's burden under paragraph (a) or (b) above.

For definitions of some of the above terminology, see the text of the [NYS law](#).

For federal laws and policies related to hate crimes, see [here](#).

Some of the most common forms of bias related crimes on college campuses include name-calling, demeaning jokes, threatening phone calls, texts, or emails, and the distribution of hate mail. Bias related crimes can also include physical attacks and vandalism. Particularly given that most AJR community interactions occur online, students should be attuned to forms of bias that may emerge in the classroom as well as through email and other digital communications.

Requests for Notifications and Information

Upon request, AJR will provide students with written information regarding the following areas (please contact Suli Fassler (sfassler@ajr.edu), the Senior Director of Administration for more information):

- Counseling, health, mental health, victim advocacy, legal assistance, visa and immigration assistance, student financial aid, and other services available, both within AJR and in the community.
- Options for academic, living, transportation, and working situations and protective measures for victims of crimes that occur while students are at AJR.
- Rights and options for victims of dating violence, domestic violence, sexual assault, and stalking.

For information from local law enforcement, including registered sex offenders, please contact AJR's contact with the New York State Police Campus Sexual Assault Victim's Unit, Investigator Peter Figiel (peter.figiel@troopers.ny.gov; 914-742-6396).